



## **FOCUS ON ASIA**

**INTERNATIONAL MEETING ON GLOBAL PIRACY,  
ARMED ROBBERY AND MARITIME SECURITY**

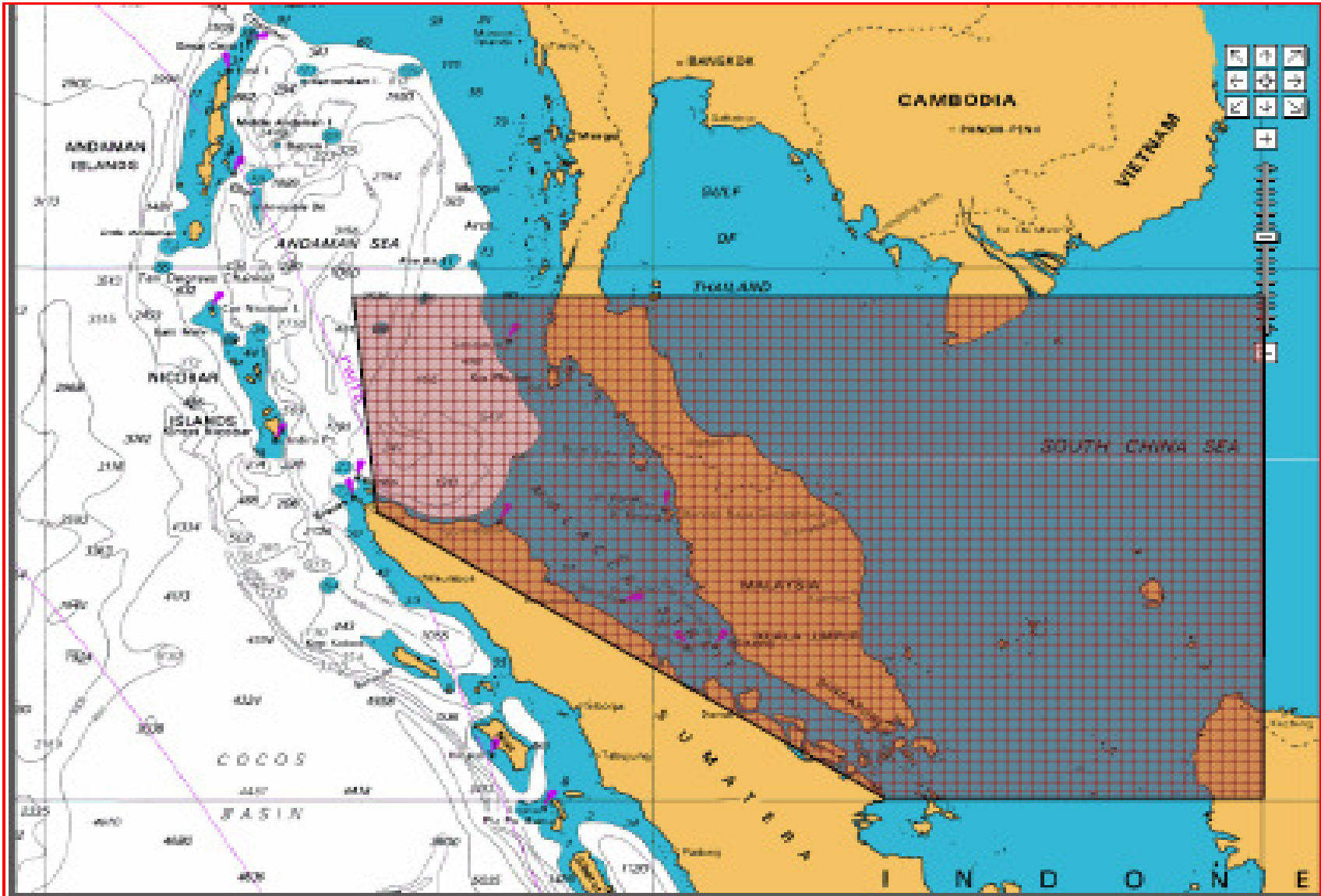
**14-15 SEPTEMBER 2015**

# IMB PIRACY & ARMED ROBBERY MAP 2015

 = Attempted Attack     = Boarded     = Fired upon     = Hijacked     = Suspicious vessel



# SHELL'S DESIGNATED HIGH RISK AREA



## **SHELL'S INITIATIVES IN EAST**

- **Dedicated Global Maritime Security Advisory Team based in Singapore**
- **Security screening for all Shell chartered vessels trading in Piracy High Risk Area**
- **Providing security hardening assessment and recommendations (BMP4)**
- **Providing anti-piracy training for ships crew**
- **Tracking of vessel positions and mandatory reporting requirements**
- **Engagements with ship owners to share best practices and obtain feedback**
- **Engagements with regulatory authorities and relevant agencies such as MMEA, Royal Malaysian Navy, IMB & IFC.**

# PROPOSED REQUIREMENTS FOR SHELL CHARTER

- ✓ **Minimum Speed**
- ✓ **SSAS (tested, working, crew familiar)**
- ✓ **Communications**
- ✓ **Minimum Lookouts**
- ✓ **Enhance Capability Binoculars**
- ✓ **Mandatory Reporting to IFC**
- ✓ **Perimeter security (razor wires)**
- ✓ **Window hardening (HSSE Compliant)**
- ✓ **Door hardening (HSSE Compliant)**
- ✓ **Internal door hardening/locks bridge**
- ✓ **Engine room access doors secured**
- ✓ **Citadel located and hardened**
- ✓ **Citadel communications (tested)**
- ✓ **Citadel contact numbers and crew list**
- ✓ **Citadel food & water (72 hours)**
- ✓ **Citadel medical kit**
- ✓ **Fire axe removed (HSSE Compliant)**
- ✓ **Mannequins deployed**
- ✓ **Lights working**
- ✓ **Training/ handovers/new members**

# **PROPOSED REMEDIAL MEASURES FOR IMPROVEMENT**

## **Establish Trilateral Cooperation Mechanisms;**

- **Joint Naval & Aerial Patrolling**
- **Prompt Coordinated Response**
- **Surveillance on Phantom Ships**

